

1st ALTO

Boo - Hoo

mod. *f*

Sol: [A] (ALTA LOMBARDA)

1st And [B]

Sol: (VOCAL)

1st 2nd [D] Sol:

[E] 11

Sol: F 2 (Boo-Hoo) 1st Alto

STACCATO

p

BROADLY - MOL. RALL.

3rd Alto

Boo-Hoo

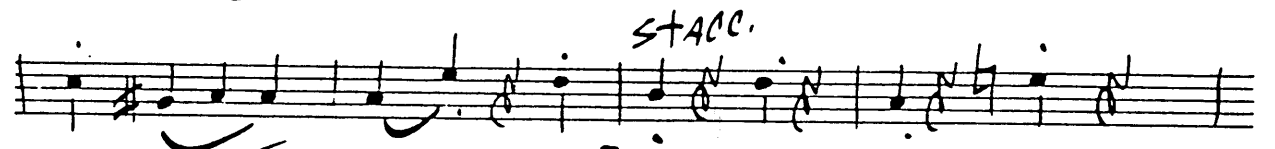
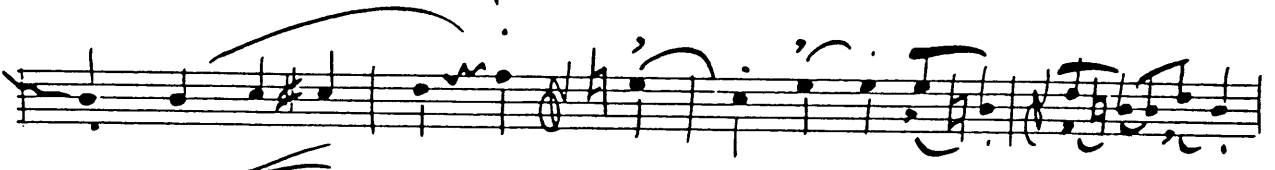
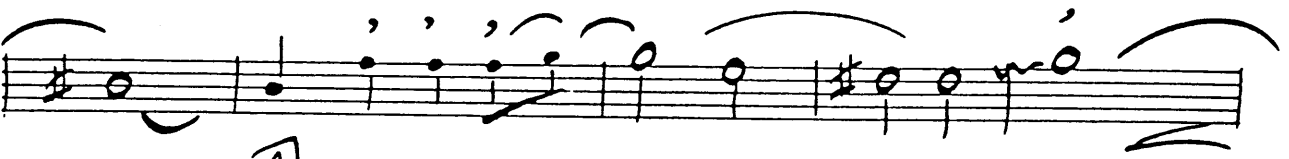
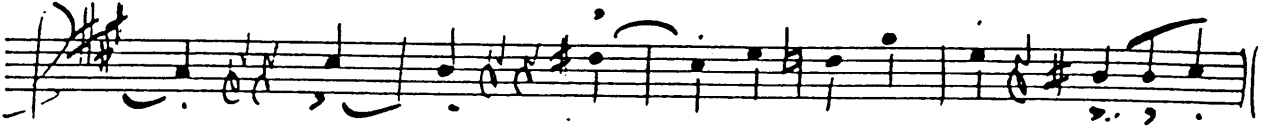
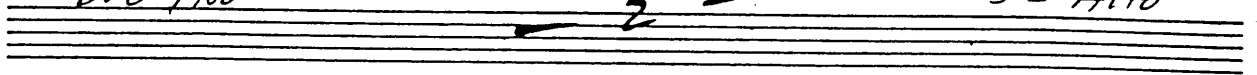
mod

A Solo - (ALA LOMBARDO)

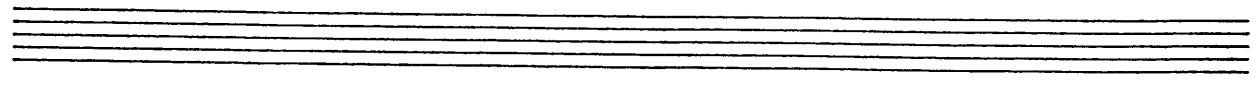
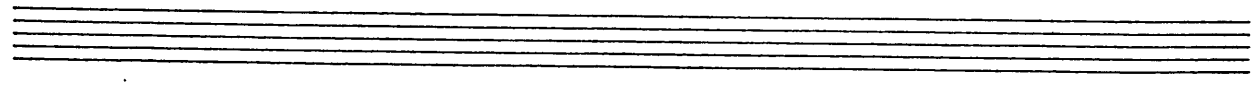
VOCAL

Boo Hoo

3rd Alto



Roll. ~~molto~~ < >



2nd Bb TENOR

Boo - Hoo

Mod.

A Soli: (ALA LOMBARDO)

1 2nd **B**

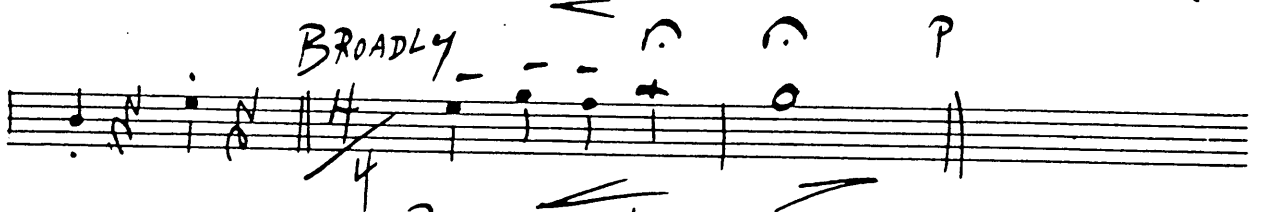
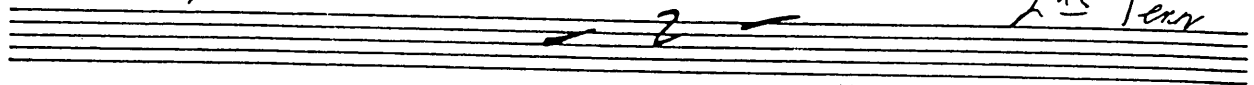
C (Voice)

1st 2nd

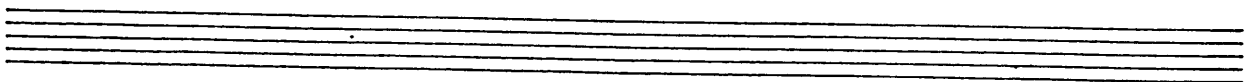
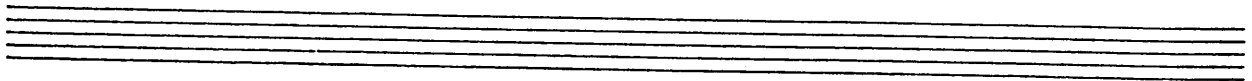
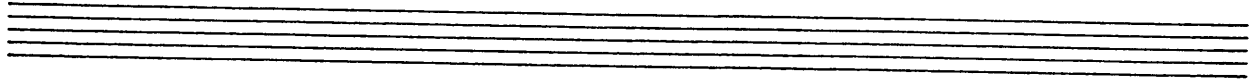
D 7 Soli:

Bro - Hoo

2nd Tenor



Roll - molto



4th TENOR

Boo - Hoo - -

Mod.

[A] Sol: (ALA LOMBARDO)

1st

2nd [B] 2

[C] Vo:ce 1

1

1st [D] 7 2nd [D] 7 Sol:

1

[E]

Boo-Hoo

4th Tenor

Handwritten musical score for 4th Tenor, titled "Boo-Hoo". The score consists of six staves of music. The first staff begins with a treble clef, a key signature of two sharps (F# and C#), and a time signature of 2/4. A dynamic marking of *f* is present. The first measure contains a double bar line with a diagonal slash and the number "10". The second measure features a whole note chord with a box around the letter "E" and the instruction "sol:". The melody continues with quarter and eighth notes, some with slurs and accents. The fifth staff includes the instruction "STACC." above the notes and "BROADLY" above the final notes. The sixth staff concludes with the instruction "RALL. molto" and a double bar line. The remaining three staves are empty.

BAR:

Boo - Hoo

(Lombardo)

Mod.

Bro-Hoo

Bari

Handwritten musical score for a vocal part, consisting of five staves. The notation includes various notes, rests, and dynamic markings. The first staff has a treble clef and a key signature of two sharps (F# and C#). A large '2' is written above the first two staves. The second staff contains a circled '167' above a complex chordal passage. The third staff has a '1' above a note and the word 'stacc.' below it. The fourth staff has 'BROADLY -' above it and 'Rall. molto' below it. The fifth staff contains a single note with a fermata and a double bar line.

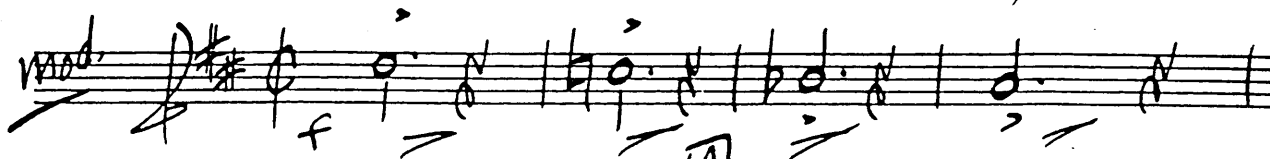
Four empty musical staves, each consisting of five horizontal lines, provided for accompaniment or other parts.

VOCAL AT "C"

1st Trumpet

Boo-Hoo (Lambert)

mod. *f*



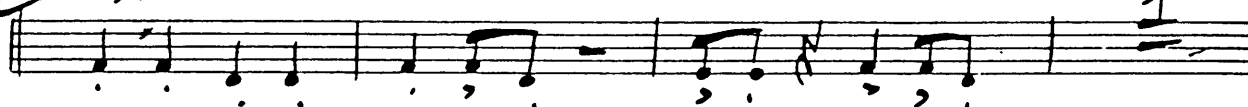
A *p*



2 5 *1st* *2nd* *sol:*



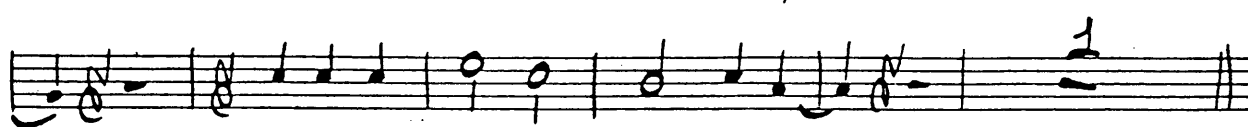
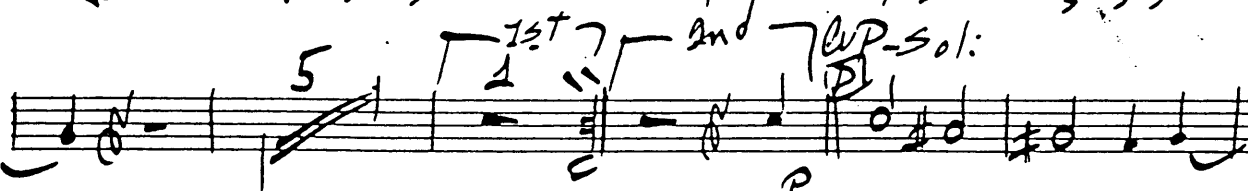
B *sol:* *stacc.*



C *sol:* *cup* *mf.*



5 *1st* *2nd* *cup-sol:* *p*



sol:

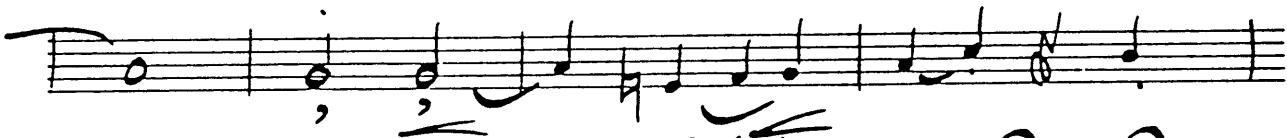
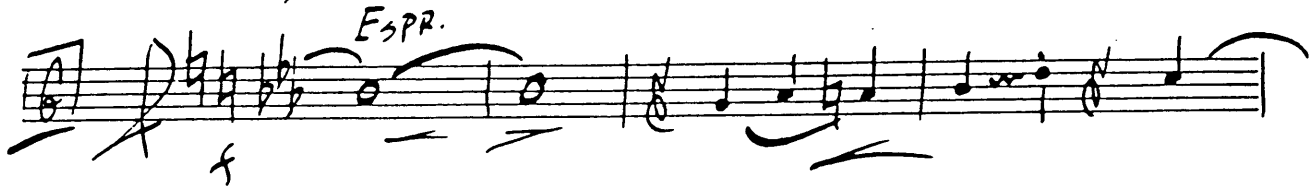
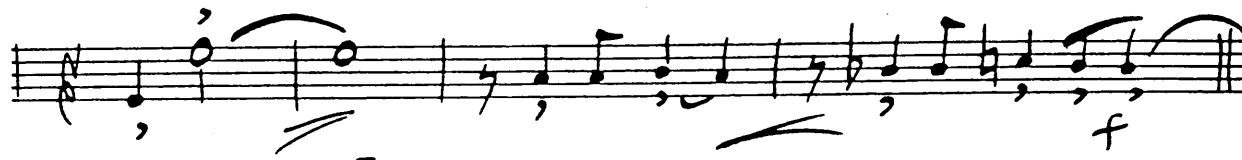
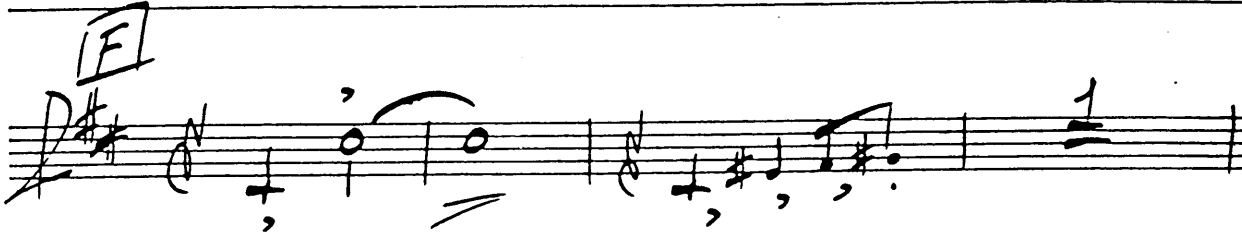
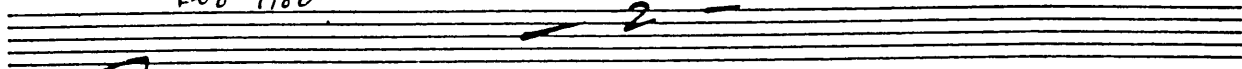


5 *open* **E** 12 *f*



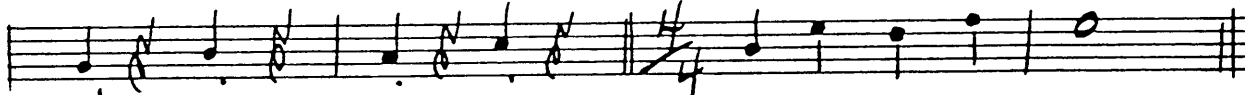
Boo-Hoo

1st Trpt.



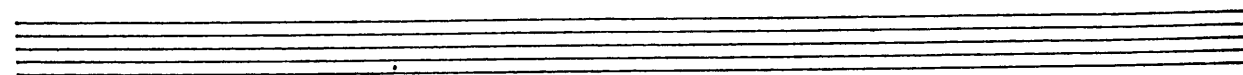
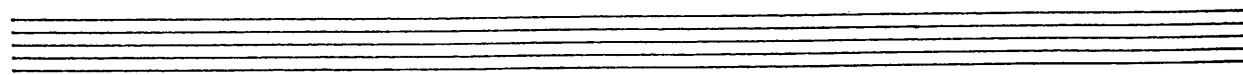
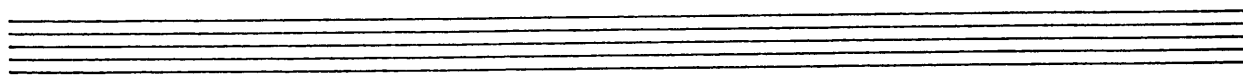
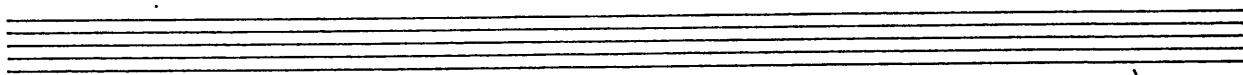
STACC.

BROADLY



P

RALL. molto



2nd Trumpet

Boo - Hoo

mod. *f*

A

5 1 2

1st 2nd soli

B STACC.

11 1 2

1st 2nd Cup soli

C

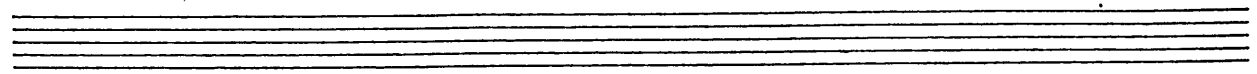
1 11 12

f OPEN

E

F

F



Beo Hoo

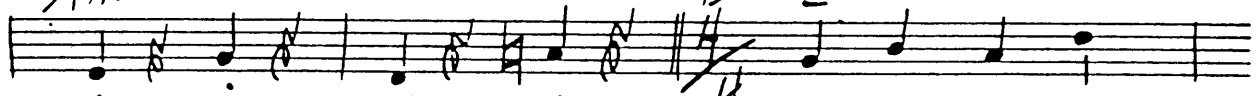
2nd TV/E

2



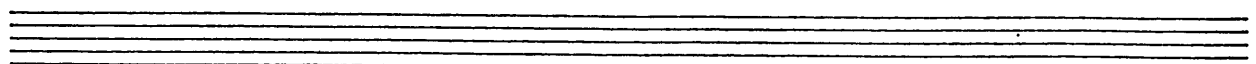
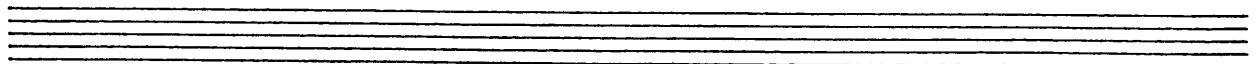
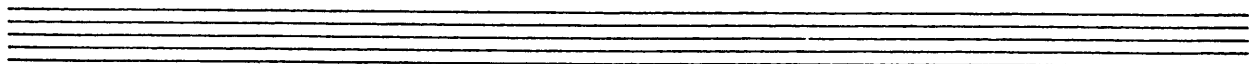
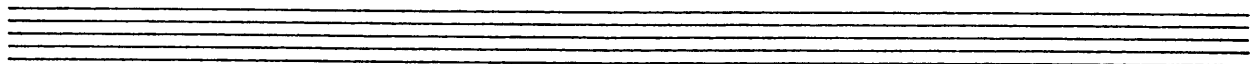
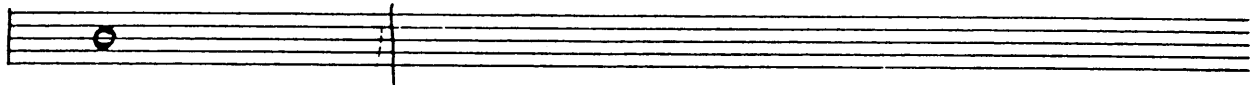
STACC.

BROADLY



P.

Rall MOLTO



3rd Trumpet

Boo - Hoo

Handwritten musical score for 3rd Trumpet, titled "Boo - Hoo". The score is written on a grand staff with a treble clef and a key signature of one sharp (F#). It includes various musical notations such as notes, rests, slurs, and dynamic markings. The score is divided into several measures, with some measures containing specific performance instructions and fingering numbers.

Key markings and annotations include:

- Measure 1: **A** (circled), **1**, **2**
- Measure 2: **2** (written below the staff)
- Measure 3: **5** (written below the staff)
- Measure 4: **1**, **2**, **1 1** (written below the staff)
- Measure 5: **11** (written below the staff), **1st** (written above the staff)
- Measure 6: **2nd Cup**, **D** (circled), **Sol:** (written above the staff)
- Measure 7: **1**, **11**, **open** (written above the staff)
- Measure 8: **E** (circled), **12** (written below the staff), **F** (circled)
- Measure 9: **1** (written below the staff)

The score concludes with three empty staves at the bottom.

Bee-Hoo

3rd Type

Handwritten musical notation on a five-line staff. The piece is titled "Bee-Hoo" and is identified as "3rd Type". The notation includes a treble clef, a key signature of one sharp (F#), and a 3/4 time signature. The melody consists of several measures with notes, rests, and slurs. Performance markings include "BROADLY" and "Rit - MOLTO" with a deceleration wedge. A "STACC." marking is present above the final measure. The notation is written in black ink on a white background.

Five empty musical staves, each consisting of five horizontal lines, arranged vertically. These staves are provided for additional notation or practice.

~~1st~~ Trumpet
4+1

Boo-Hoo

mod. *f*

A *p*

2 5 *1st* *2nd* *sol:*

B *sol:*
stacc.

1

C *Solo-Cup mt.* 2

5 *1st* *2nd* *Cup-sol:* *p*

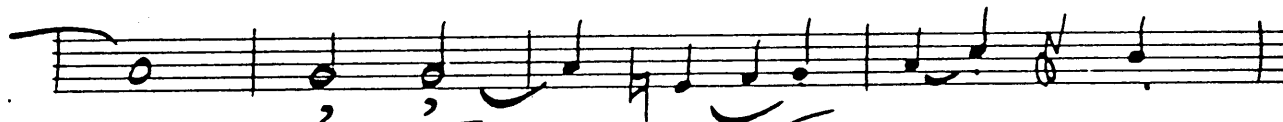
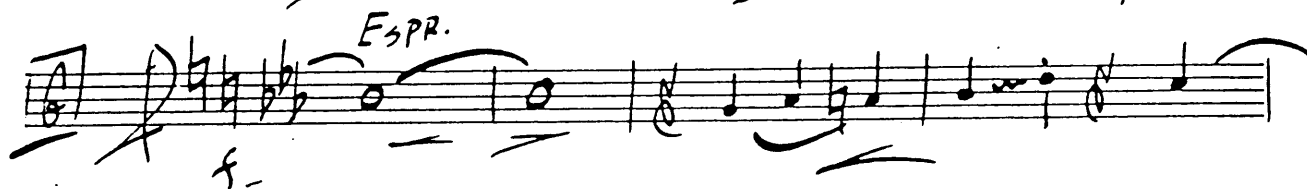
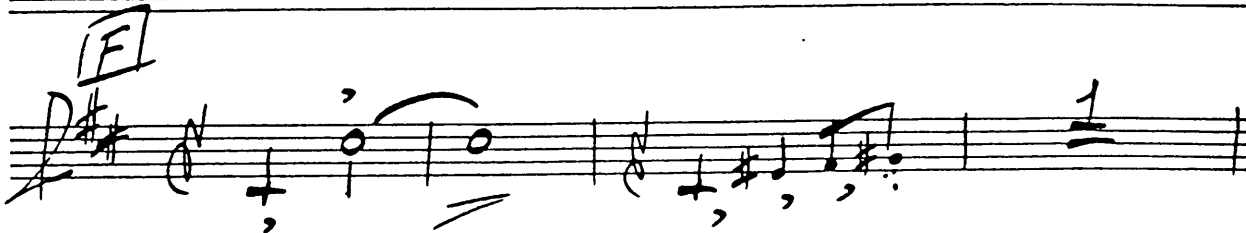
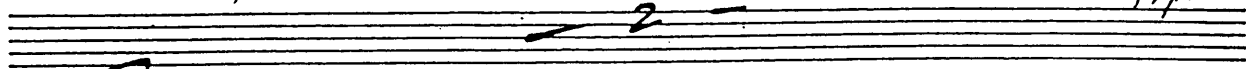
1

Solo 2

5 *open* **E** 12 *f*

Bro-Hoo

4th Trpt

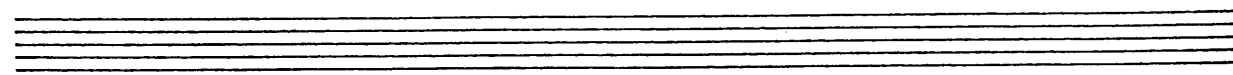
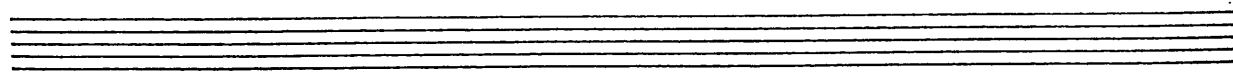
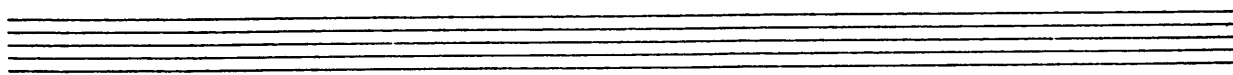
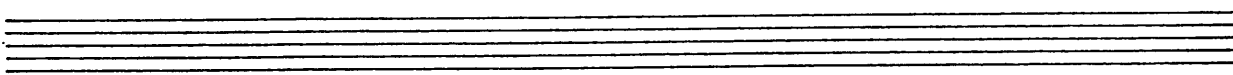


STACC.

BROADLY

P

RALL. molto



1st Bone

Boo-Hoo

(B) Sol: STACC.

Brz-Hoo

1st Bone

Handwritten musical score for 1st Bone. The score consists of five staves of music. The first staff begins with a circled 'E' and a circled 'F'. The second staff has a circled '1'. The third staff has a circled 'A' and a circled '3'. The fourth staff has a circled '4' and a circled '5'. The fifth staff has a circled '6' and a circled '7'. The score includes various musical notations such as notes, rests, slurs, and dynamic markings. A large '2' is written above the first staff. The word 'STACC.' is written above the fourth staff. The word 'BROADLY' is written above the fifth staff. The word 'Rall. Molto' is written below the fifth staff. The word 'P' is written below the fourth staff. The word 'Coll' is written below the fifth staff.

2nd Bone

Boo-Hoo

mod. (3) *f* *A*

Musical staff with notes, dynamics *f*, and a boxed section labeled *A*.

P 2

Musical staff with notes, dynamics *P*, and a measure marked with a '2'.

5 1st 2nd *P*

Musical staff with notes, dynamics *P*, and markings for '1st' and '2nd'.

B STACC. soli:

P 1

Musical staff with notes, dynamics *P*, and a measure marked with a '1'.

C (Voice) solo gliss

1 # 2 w o

Musical staff with notes, dynamics *P*, and markings for '1', '#', '2', 'w', 'o'.

2 # 4 1st 2nd Cup *P*

Musical staff with notes, dynamics *P*, and markings for '2', '#', '4', '1st', '2nd', 'Cup'.

Cup soli:

D 1 1 OPEN gl. # 2 w o

Musical staff with notes, dynamics *f*, and markings for '1', '1', 'OPEN', 'gl.', '#', '2', 'w', 'o'.

1 1 OPEN gl. # 2 w o 2

Musical staff with notes, dynamics *f*, and markings for '1', '1', 'OPEN', 'gl.', '#', '2', 'w', 'o', '2'.

gl. 4 **E** 12 *f*

Musical staff with notes, dynamics *f*, and markings for '#', 'gl.', '4', 'E', '12'.

Empty musical staff.

Bro-Hoo

2nd Bone

Handwritten musical score for a 2nd Bone instrument. The score consists of five staves of music. The first staff begins with a boxed 'F' and a '3' in a circle. The music features various note values, rests, and dynamic markings such as 'BROADLY', 'Rall- molto', 'STACC.', and 'P'. There are also some handwritten annotations like '2' and '1' above the staff lines.

3rd Bone

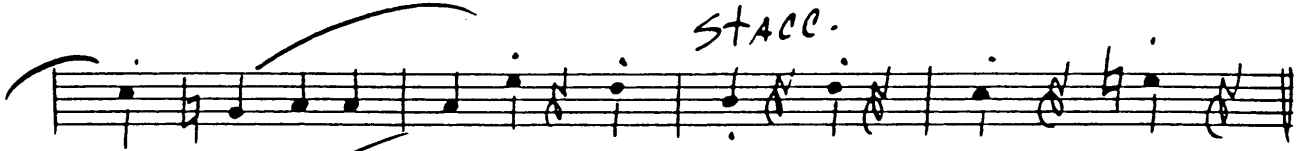
Boo-Hoo

Handwritten musical score for '3rd Bone Boo-Hoo'. The score consists of ten staves of music. The first staff is marked 'Mod.' and contains a 3/4 time signature. The second staff has a circled 'A' above it. The third staff has a circled 'B' above it. The fourth staff is marked 'stacc'. The fifth staff has a circled 'C' above it and 'Voice' written next to it. The sixth staff has a circled 'D' above it and 'Cup Sol:' written next to it. The seventh staff has 'OPEN' written above it. The eighth staff has a circled 'E' above it. The ninth staff has a circled 'F' above it. The tenth staff has a circled 'G' above it. The score includes various musical notations such as notes, rests, slurs, and dynamic markings like 'f'.

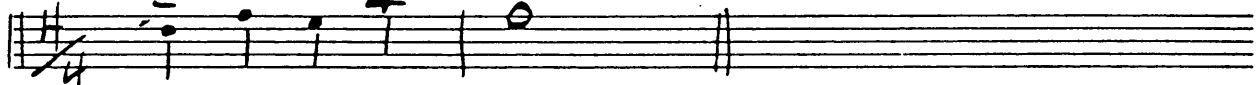
Boo-Hoo

3rd Bone

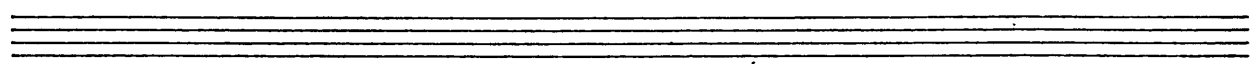
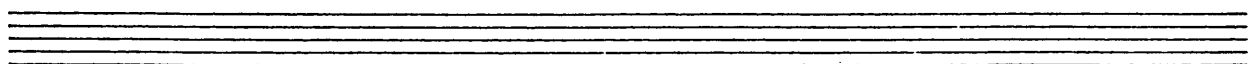
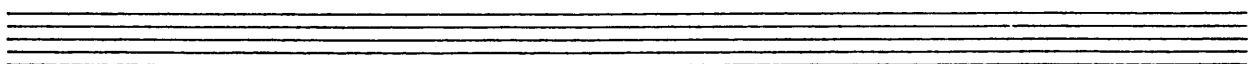
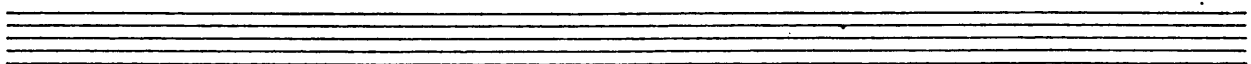
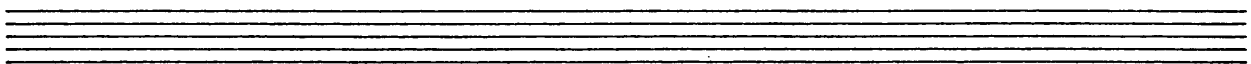
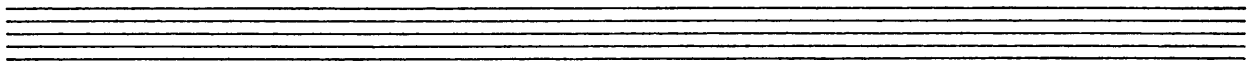
2



BROADLY



Roll - molto



~~4/4~~ Bone

Boo-Hoo

mod. **(5)** *f* **A**

P **5** **1st** **2nd**

B STACC. soli:

P

C (Voice) solo gliss

P **1** **#** **w** **g**

2 **#** **w** **g** **4** **1st** **2nd** **CUP**

CUP soli:

D

1 **1** **OPEN** **gl.** **#** **w** **g** **2**

**gl.** **4** **f** **E** **12**

Bro-Hoo

(Lombardi)

4th Bme

Handwritten musical score for 4th Bassoon. The score consists of five staves of music. The first staff begins with a circled 'F' and a '3' in a circle. The second staff has a '2' above it. The third staff has a circled 'A' and a '3' in a circle. The fourth staff has 'STACC.' written above it. The fifth staff has 'BROADLY' written above it, a '4/4' time signature, and 'Rall- molto' written below it. There are also 'P' and 'col' markings. The music includes various note values, rests, and dynamic markings.

BASSO

Boo - Hoo

Handwritten musical score for Bassoon. The score consists of ten staves of music. The first staff is marked "mod" and "ARCO". The second staff has a boxed section labeled "A" with "p:33" and "p" below it. The third staff has a boxed section labeled "B" with "1st" above it. The fourth staff has a boxed section labeled "C" with "Vice" above it. The fifth staff has a boxed section labeled "D" with "1st" and "2nd" above it. The music includes various notes, rests, and dynamic markings.

Bio-Hoo

(BASS)

E (Pno. solo)

p

F

mf

G

f

stacc.

BROADLY ARCO

p

RALL MOLTO

GUITAR

Boo-Hoo

Handwritten musical score for guitar, featuring ten staves of music with various chords and melodic lines. The score includes the following elements:

- Staff 1:** Melody line starting with a half note C, followed by quarter notes Bb, Ab, G7, and Bb. Chords below include C, Bb, Ab, G7, C, and Bb.
- Staff 2:** Chords include Ab7, G7, A, C, G7+5, C, G7, C0, C, and Eb0.
- Staff 3:** Chords include G7, C#0, G7, G0, G7, G7, and C#0. A melodic line is written above the staff.
- Staff 4:** Chords include G7, C0, C, G7, C, G7, C, and G7. A melodic line is written above the staff.
- Staff 5:** Chords include C, Fm6, G13, and C. A boxed section labeled [B] is indicated.
- Staff 6:** Chords include G7, C#0, G7, C, C, G+B, C, G, C0, C, and C0. A boxed section labeled [C] is indicated.
- Staff 7:** Chords include G7, Bb, E0, G7, G0, G7, G7, C, C#0, G7, F37, and C0.
- Staff 8:** Chords include C, G7, C (Bell), C, 2nd, B+, and [D] E G#m E. A melodic line is written above the staff.
- Staff 9:** Chords include B7, G7, G, D7, G7, and Dm7. A melodic line is written above the staff.
- Staff 10:** Chords include G7 (Bell), C, G+B, C, G7, C0, C, and C0. A melodic line is written above the staff.

Bee-Hoo (Lamberto) - 2 - Guitar

Musical staff with chords: G7, Bb, E0, G7, E0, G7, G7, C, C#0

Musical staff with notes and chords: G7, CP, C, G7, C, G7+5, C, Pno. solo - 8va sempre

Musical staff with notes and chords: 8va sempre, C, G+, C, G7, C0, C, C0

Musical staff with notes and chords: G7, C#0, G7, G0, G7, G7, 7 5

Musical staff with notes and chords: C, #, C#0, G7, C0, e, G7, C, 3 7, B+

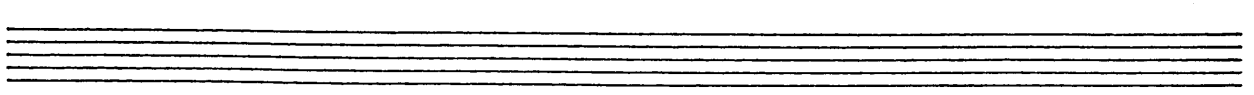
Musical staff with notes and chords: no solo, E, B7, G, D7, G7, Ab7, Ab+5

Musical staff with notes and chords: Db, Ab+, Db, G0, Db, E0

Musical staff with notes and chords: Ab7, B0, Ab7, B0, Ab7, Ab7, STACC.

Musical staff with notes and chords: BROADLY Db, Ab7, Db, P (no after beats)

RALL molto



DRUMS

Boo-Hoo

lento molto

Mod. *f* **A** *mp* **B**

Cym solo *p* Voice BRUSHES **C** **D**

E *p* On Rims (Pno. solo)

F *mf*

G *f* **W.B.**

BROADLY *f* **H** *RALL. molto*

Boo - Hoo

PIANO

Mod. *C* *Bb* *Ab* *G7* *C* *Bb*
Ab7 *G7* *A* *C* *G7+5* *C* *G7* *C0* *C* *Eb0*

G7 *C#0* *G7* *G0* *G7* *G7* *sol:* *C* *C#0*

G7 *r-37* *C0* *C* *G7* *1st Bell* *C* *2nd* *G7*

B *C* *Fm6* *G13* *C*

G7 *C#0* *G7* *Bell* **C** *Vo:ce* *C* *G+B* *C* *G* *C0* *C* *C0*

G7 *Bb* *E0* *G7* *G0* *G7* *G7* *C* *C#0* *G7* *r-37* *C0*

C *G7* *1st Bell* *C* *r-37* *B+* **D** *E* *G#m* *E*

B7 *r-37* *G0* *r-37* *G* *D7* *G7* *Dm7*

G7 (Bell) *C* *G+B* *C* *G7* *C0* *C* *C0*

(PIANO)

- 2 -

Buo-Hro

Lombardo

G7 Bb E0 G7 F# G7 G7 C C#0

G7 C#0 C G7 C G7+5 C Pno. Solo - SVA SEMPRE

G7 C#0 C G7 C#0 C G7 C#0 C

G7 C#0 G7 G0 G7 G7 G7 +5

C C#0 G7 C#0 C G7 C#0 B7 C-37 B+

E B7 G D7 B7 Ab7 Ab+5

Db Ab+ Db G0 Db E0

Ab7 B0 Ab7 B0 Ab7 Ab7 STACC:

BROADLY Db Ab7 Db P (no AFTER BEATS)

RALL Molto